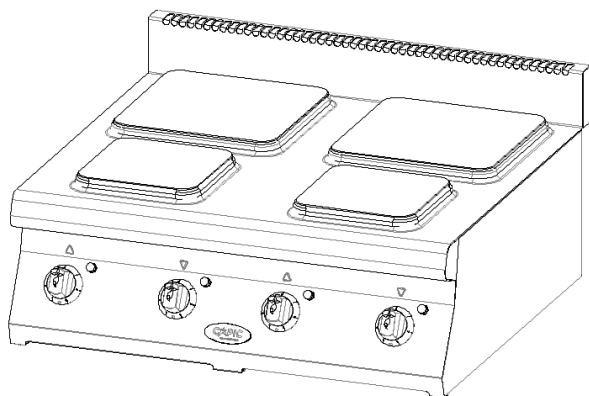


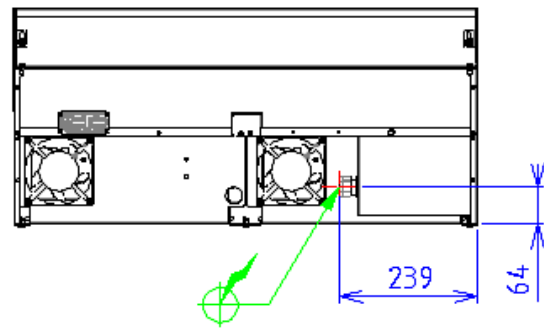
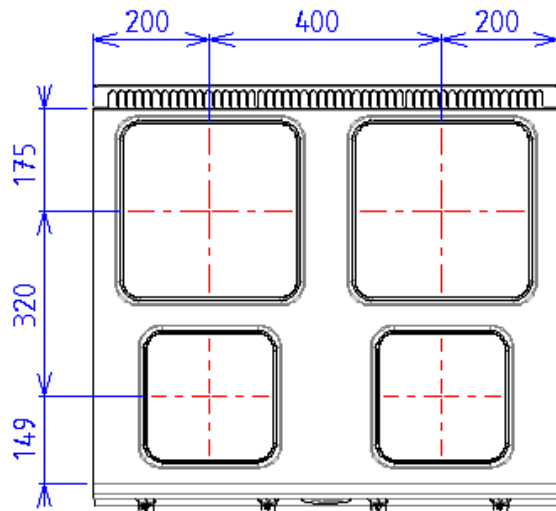
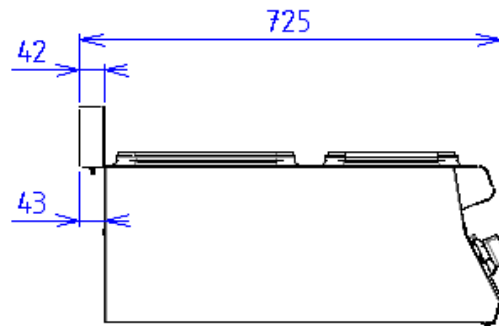
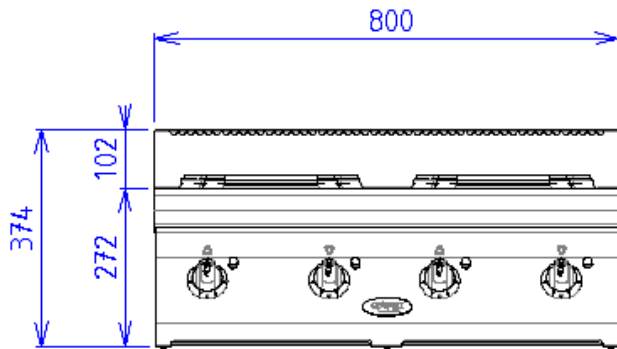
Characteristics

External dimensions : 800 X 725 X 250
Construction in planetary brushed stainless steel 18.10
Top thickness : 2 mm
Front : 1 mm planetary brushed finish
Structure : 1 mm in stainless steel
Back edge forming a chimney cover
Front without any visible screw



Top

4 square cast iron electric plates smooth and waterproof
Indicator light
7 positions switch
Puissance (4kW+2.6kW)x2

**ELECTRIC**

Electric power : 13.20kW

Elec Réservation : INTERNAL TERMINAL BOARD - Elec fitting
: 400V THREE phases + NEUTRAL

Electrical devices standard to the norm EN 60-335