

## ELEC TILTING - HOT AND COLD RUNNING WATER

**Characteristics**

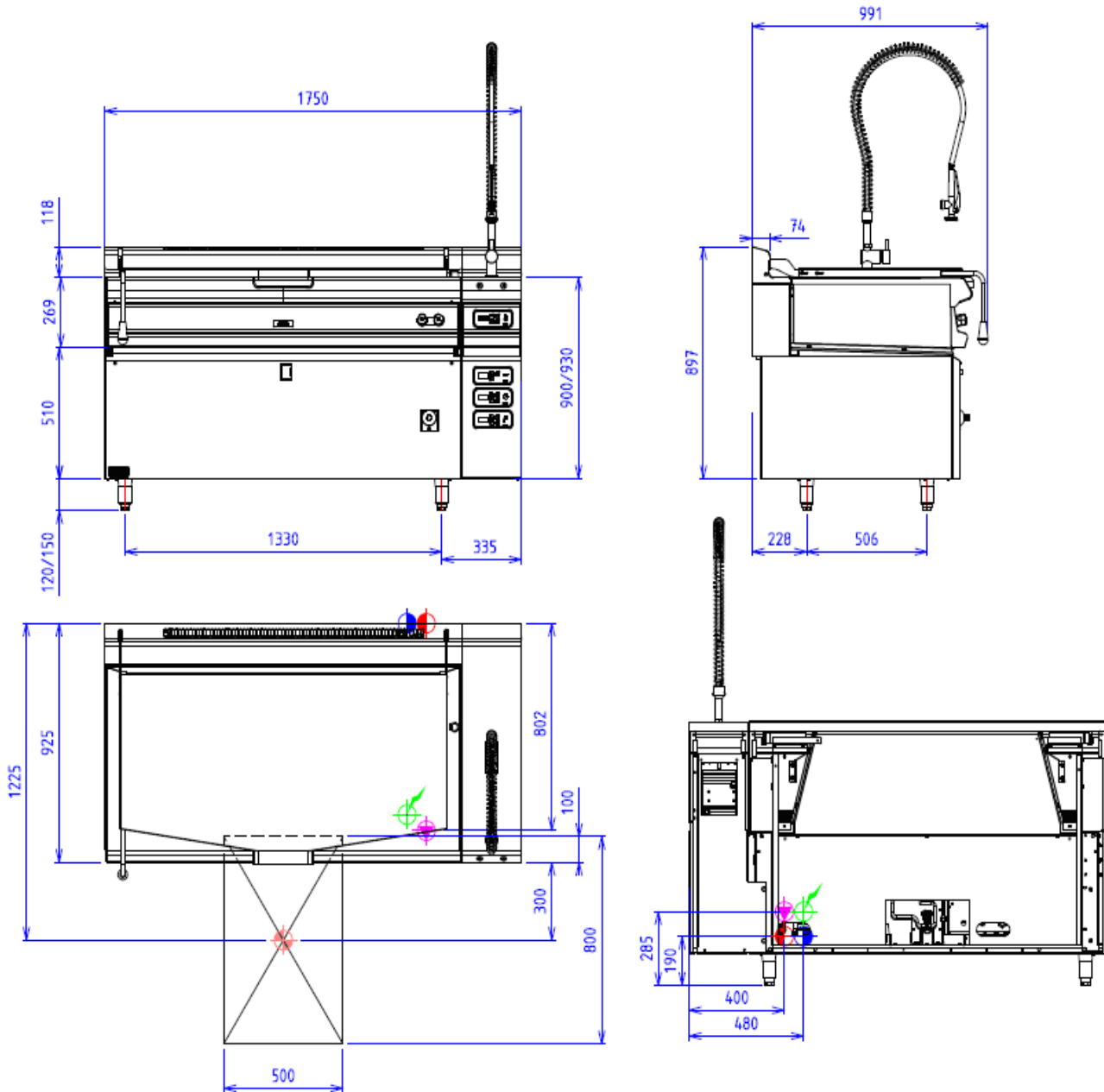
External dimensions : 1750 X 925 X 900  
 Stainless steel top 18.10 planetary planetary brushed finish  
 Top thickness : 3 mm  
 body 1 mm in planetary brushed stainless steel  
 Structure : 2 mm in stainless steel  
 Stand with composite feet of 150 adjustable in height  
 folded front edge radius 20 mm  
 Back edge forming a chimney cover

**Top**

1 mm stainless steel double lid  
 equipment with echtermann hinge  
 Tank in stainless steel 18.10 thickness 2 mm  
 Bimetal bottom - 12 mm thickness  
 Wide radius angles  
 Wide spout  
 Dimensions : 1350x575x250  
 Net capacity : 170 l.  
 Power : 31 kW  
 Heating by gas ramps  
 Thermostatic regulator with digital control panel  
 and multi sensors  
 Security pilot and thermocouple  
 Hot/Cold water supply  
 controlled from front by 1/4 turn tap  
 with ceramic components  
 Tilting by electric actuator  
 Heating stop while tilting  
 Multisensor digital thermostatic regulation  
 Digital volumetric water meter  
 Digital timer end of cooking  
 Built-in shower for water supply WW / CW  
 Electric ignition

**Options :**

removable frame bratt pan 80 (X295003)  
 spout strainer for 80for model 80 (X295007)  
 removable offset spout up to 350mm (X295014)  
 offset drain system for more then 350 mm (X295015)  
 core probe with regulation and haccp connection (X295019)



## GAS



Gas power : 31kW

Gas connection : 20/27 MALE TAPERING

Gas appliances complying with standard NF EN 203.EN 437

Gas Directive 2009/142/EC

## ELECTRIC



Electric power : 0.50kW

Elec Réservation : INTERNAL TERMINAL BOARD - Elec fitting : 230V SINGLE

Electrical devices standard to the norm EN 60-335

## WATER/AIR



Hot water fitting :15/21 FLEXIBLE



Cold water fitting :15/21 FLEXIBLE